



Whisper & clients - delivering tangible benefits.

Logistics marketing



whisper
creative consultancy

Whisper & clients - delivering tangible benefits.

Working in close partnership with our clients, whether for one project or a whole campaign, brings the most effective results. The majority of our clients have been with us for over 10 years and continue to work with us time and time again.

Whisper have the experience to create persuasive concepts that enable your brand to communicate clearly to prospects, clients and staff.

Our work includes digital designs, html emails, social media and websites as well as advertising, corporate comms, direct marketing, exhibition graphics and print.

And as we don't have the same costly overheads as other ad agencies, we can produce a wider range of creative routes for you to consider, for less of your budget. It's that simple.

For over 20 years we've provided joined-up marketing solutions for companies of every shape and size, from start ups and entrepreneurs to corporations and NGO's.

We believe working in partnership with our clients enables us to produce compelling marketing ideas - both online and offline - and because of this collaborative approach, our clients return to us time and time again.

We work extensively, but not exclusively, with clients in:

- Building & Landscape Design
- CAD/CAM • Exhibitions • Food & Drink • Healthcare
- Legal Services • Logistics • NGO's & Charities

To see how we can help drive your brand forward simply call Brian on 020 8527 3222 or email him on info@whisper-cc.com

Branding



Photography



Marketing



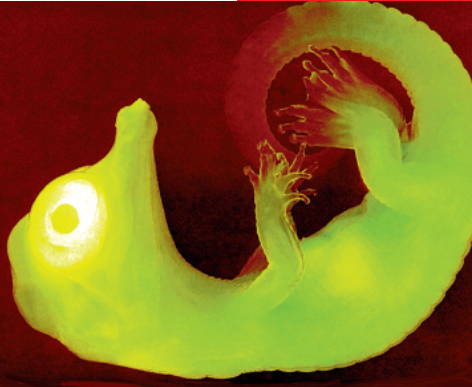
Whisper Creative Consultancy

38 Lyndhurst Road, London E4 9JU t: 020 8527 3222 e: info@whisper-cc.com w: www.whisper-cc.com



Now we're developing new ideas

M.O.L. lines are changing.
We're developing brand new ideas,
and brand new services.
We feel that they will be changes that
are worth waiting for.



After all, it has been our ability to
change that has enabled us
to become the fifth largest shipper
in the world.

To find out how M.O.L. Lines
can help your business develop,
call your local agent.



Mitsui O.S.K. Lines

U.K.: Mitsui O.S.K. Lines U.K. Tel: +44 181 477 7000
Belgium: Kennedy Houter, Tel: +32 2 221 5530
France: Saener, Tel: +33 1 47 14 58 35
Germany: Mitsui O.S.K. Lines (Deutschland) GmbH, Tel: +49 40 35 6110
Netherlands: Mitsui O.S.K. Lines (Nederland) Bv, Tel: +31 10 201 3200

Now we're hatching our plans

What came first, the Alligator
or the Egg?
Was it our policy of treating every
customer and every cargo as a
precious item that caused us to
become the fifth largest shipper in
the world?



Or was it the other way around?

To find out why M.O.L. Lines always
puts the customer first, call your
local agent.



Mitsui O.S.K. Lines

U.K.: Mitsui O.S.K. Lines U.K. Tel: +44 181 477 7000
Belgium: Kennedy Houter, Tel: +32 2 221 5530
France: Saener, Tel: +33 1 47 14 58 35
Germany: Mitsui O.S.K. Lines (Deutschland) GmbH, Tel: +49 40 35 6110
Netherlands: Mitsui O.S.K. Lines (Nederland) Bv, Tel: +31 10 201 3200

Now we're breaking out of our shells

Faster transits than ever before, to all
the key ports of call.
That's what our new "Trunkline"
concept promises, and delivers.



But what else would you expect from
the fifth largest shipper in the
world?

To find out how M.O.L. Lines can
help you break out of your shell, call
your local agent.



Mitsui O.S.K. Lines

U.K.: Mitsui O.S.K. Lines U.K. Tel: +44 181 477 7000
Belgium: Kennedy Houter, Tel: +32 2 221 5530
France: Saener, Tel: +33 1 47 14 58 35
Germany: Mitsui O.S.K. Lines (Deutschland) GmbH, Tel: +49 40 35 6110
Netherlands: Mitsui O.S.K. Lines (Nederland) Bv, Tel: +31 10 201 3200

Now we're ready to go

We promised new ideas and new
services, and now they're here.
5 new ships!
3 fixed day sailings a week from
Europe to the Far East!



And faster transits than ever before.

We think it was worth the wait.
To find out how M.O.L. Lines can get
you ready to go, call your
local agent.



Mitsui O.S.K. Lines

U.K.: Mitsui O.S.K. Lines U.K. Tel: +44 181 477 7000
Belgium: Kennedy Houter, Tel: +32 2 221 5530
France: Saener, Tel: +33 1 47 14 58 35
Germany: Mitsui O.S.K. Lines (Deutschland) GmbH, Tel: +49 40 35 6110
Netherlands: Mitsui O.S.K. Lines (Nederland) Bv, Tel: +31 10 201 3200

Mitsui O.S.K. Lines

Magazine ads: Concepts, design & copy.

With some carriers to the Far East
you're stuck between
the Devil and
the deep blue sea.



But with our 4 fixed day sailings
from Europe every week,
you'll be smiling.



Can your present shipper
offer your four fixed day sailings a
week to and from the Far East, with transit times
of just 29 days from Southampton to Kobe?

Or just 20 days for the westbound transit from
Singapore to Hamburg?

Can they offer quick onward connections, to

extend coverage to many other
trading areas: such as from Singapore
providing a network of dedicated feeder services
giving door to door links with Thailand, the
Philippines, Malaysia, Vietnam and markets in
South Asia?

P&O Containers' fast new service is even more

reliable and gives you even more coverage of the
markets throughout the Far East.

We are a total transport and distribution
company:

Years of experience
handling millions of
containers is combined



with skilled, professional staff and expert local local
agents to provide fast, cost effective and reliable
shipments of your FCL and LCL cargo.

For more details on our Far East service call

your local P&O
Containers
office or agent.



It's true. Things are bigger in America. And TFL's operation
is no exception.

Our transatlantic fleet boasts the largest ships, serving the
major ports. We have our own offices in every key industrial
and commercial centre, thereby ensuring first-class continuity
of service door-to-door,
state by state.

Mind you, what TFL do rather well over there,
P&O Containers do equally well over here, which guarantees
exporters and importers reliable through transportation, either
side of the Atlantic.

If you're trading with America, choose the Atlantic carrier
with a reputation for
quality and service.



P&O Containers

Magazine ads: Concepts, design & copy.



For your
exhibition
 to really
stand out



Access All Areas

offers a fresh approach to exhibitions. Working with your own stand designers or one of our design associates, we make sure the right image is developed for your company. Over 20 years of **project management** experience, ensures your



exhibition stand is on budget - on time - every time. We'll not only

organise the **transport**, the **build** and the **break down** of



your exhibition stand, we can also **store it between shows**. We are confident we



can help you at every stage of your project.

An exhibition stand is not a stand alone item.



An exhibition stand is an important part of the marketing mix, and as such, should reflect both your corporate vision as well as your corporate identity.

If you need an individually designed stand for a one-off exhibition or an off-the-shelf system for a series of trade shows across the UK or Europe, **Access All Areas** can help.

We are very happy to work alongside your advertising and PR agencies to realise their stand design or, alternatively, to utilise the skills of one of our associate design companies.

The stand design needs to balance the requirements of your sales force with the best way to generate stand traffic - our associate design companies have the experience to recommend the solution that is right for you.

Once the stand is designed, **Access All Areas** comes into its element. Our project management experience ensures the timings for the construction work, transport, build and break down are strictly adhered to. Our reputation for reliability and service has been earned by listening to our clients and working closely with them.



Whatever goes up, must come down.

We work swiftly and professionally behind the scenes, 24hrs a day, to ensure that your exhibition is an outstanding success.



Access All Areas has an in-depth knowledge of major UK and European venues. Whether it's the location of a service duct in a venue or hall, or providing electricians certified to European safety standards - **Access All Areas** takes care of it all.



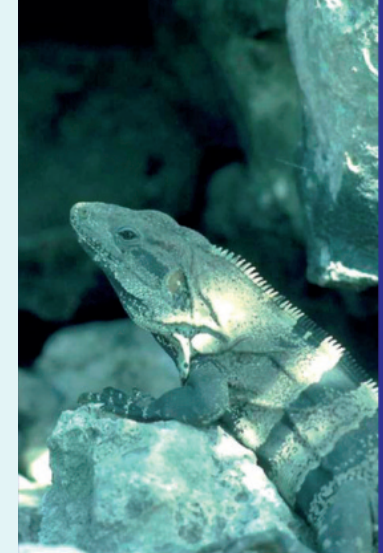
Floor coverings such as Exhibition Cord, velours, vinyl and all kinds of woods can be provided, and even special requirements such as logos, that are woven or printed into the flooring, can be accommodated with ease.

After your exhibition has finished, **Access All Areas** will break down the stand quickly and carefully, recycling as many elements as possible.

Our secure London storage facility is an ideal location to hold your stand until the next time you use it.



Access All Areas has been a successful exhibition contractor for over 20 years, now it's your chance to put us to the test. Simply call David Haggis on 020 8885 4646 to discuss your next project.



Yourexhibition
 contractornee
 dstoblendintot
 hebackground

Access All Areas

Name, logo & brochure: Concepts, design & copy.